

KSB heat transfer engineering:
a comprehensive range covering
every requirement

KSB热力传输工程：满足广泛的应用范围



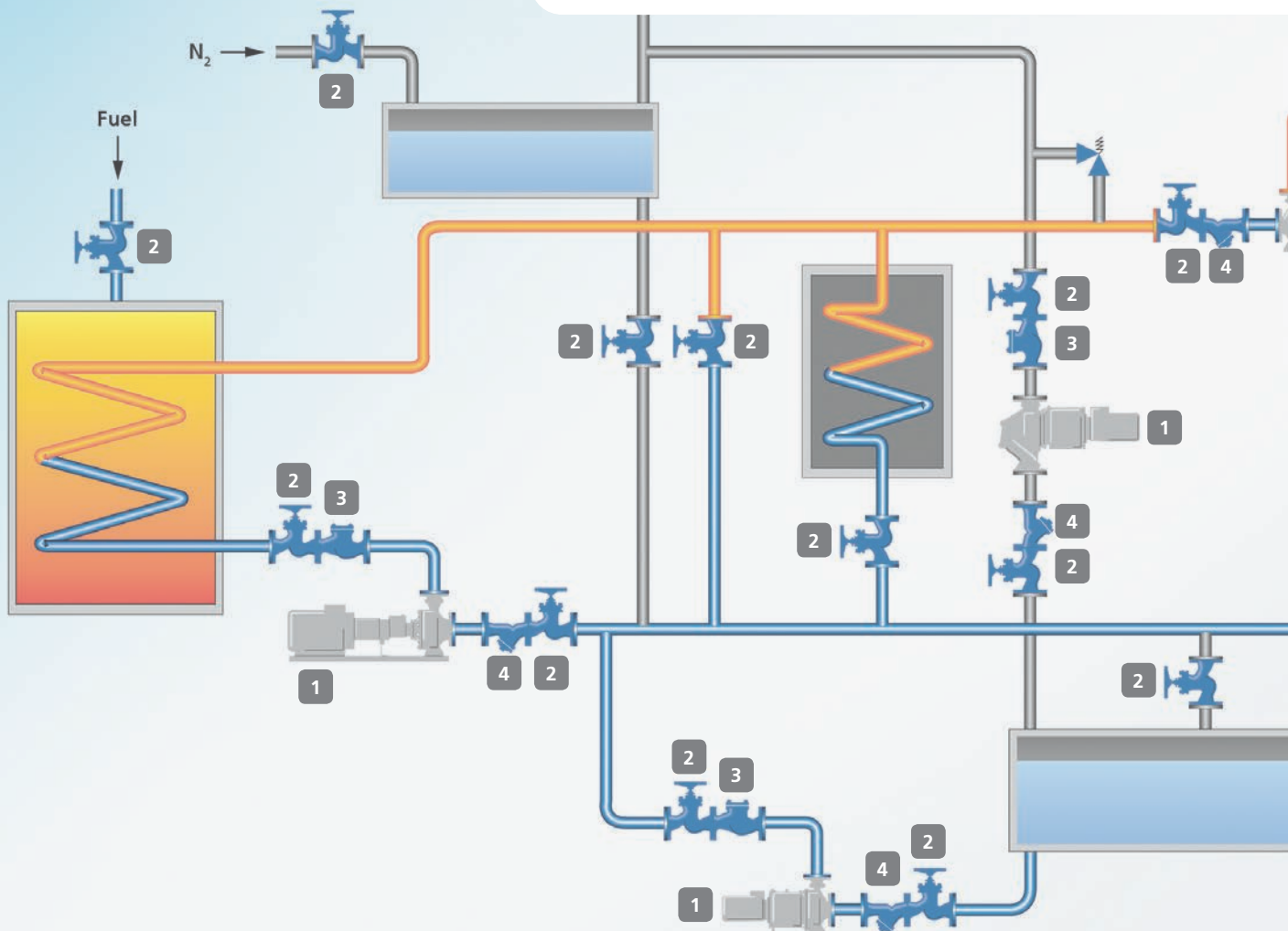
From a supplier to a partner: full-circle expertise creates added value

从供应商到合作伙伴：全系列专业服务 创造附加值

As far as heat transfer fluids are concerned, you can rely on KSB's full-circle expertise and unique package of products and services. It is made up of pumps, valves, proven automation and drive technology and a comprehensive set of services designed to fill every need. We have the perfect solution for every requirement. This makes KSB your partner of choice for any kind of heat transfer application.

当你关心到热力传输的时候,你可以完全依赖KSB的全系列的,独一无二的产品包和服务. 它由水泵,阀门,自动化驱动技术以及广泛满足各种要求的服务来构成. 我们针对每项要求都提供完美解决方案.这使得KSB成为你在热力传输应用中的合作伙伴.

KSB's heat transfer range:
the perfect product for every application



Maximum support – whenever you need it

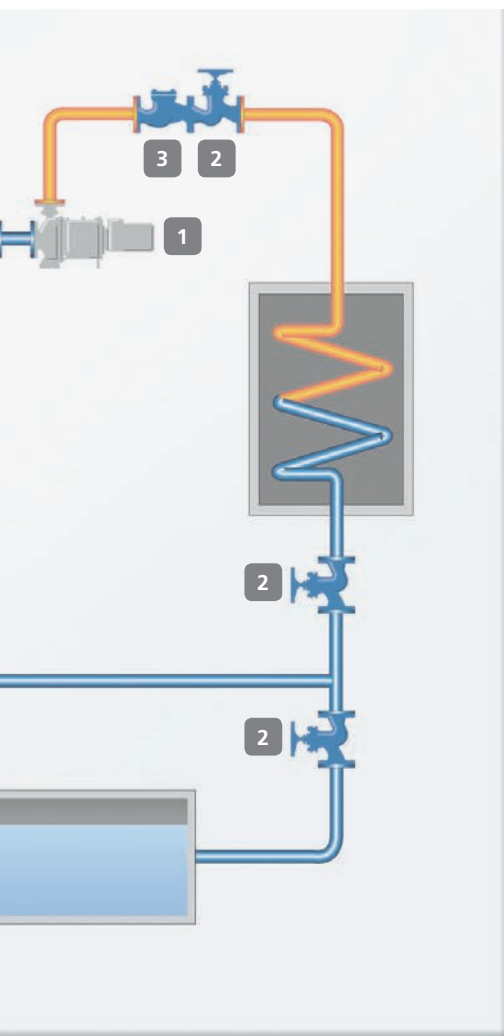
最大化的支持—任何时候当你需要时

Safe pumps and valves are a basic requirement of heat transfer systems. KSB is more than a supplier of components. The know-how gained from decades of experience in the field of heat transfer engineering enables us to offer our customers products that meet the highest quality and safety standards. With our all-in package our customer support starts as early as the planning phase, and we never lose track of combining the best deal, costs and delivery times.

安全的水泵和阀门是热力传输系统中的基本要求。KSB不仅仅是产品供应商，从过去数十年现场热力传输应用经验中吸取了许多的知识，所以我们知道如何提供满足客户最高质量与安全的产品。在项目的初期阶段，我们就与客户提供支持，我们从不认输在整合价格、成本以及交货事情上。

Short response periods, transparent communication and maximum reliability across all stages of a project: our performance will leave you convinced. Safety you can rely on. It's a promise.

快速回应，透明的沟通，以及最大可靠性贯穿于项目的每一个阶段：我们的作为将使你感到信任，可依赖的安全性。这是我们的承诺。



1 Pumps 水泵:

- Etanorm, Etaline, Etabloc SYT
- Etanorm RSY
- HPK-L
- RPH
- RPHmdp
- Magnochem
- HX/HY (Nikkiso-KSB)

2 Shut-off valve:

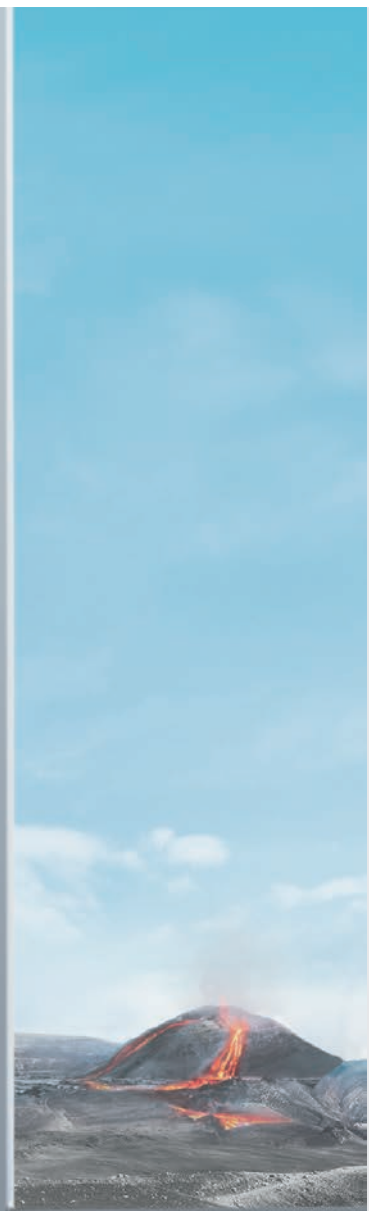
- NORI 40 ZYLB/ZYSB
- BOA-H
- TRIODIS 150–300

3 Non-return valve:

- NORI 40 RXL/RXS
- BOA-R
- SERIE 2000 Class 150–300

4 Strainer:

- NORI 40 FSL/FSS
- BOA-S



Every heat transfer fluid pump a highlight – just as **Etanorm SYT**

每一个热力传输系统的泵都有亮点—如**Etanorm SYT**

With its unique product range and first-class technical features, KSB sets standards in the field of heat transfer fluid pumps. Our products and services cover solutions for all system conditions and safety requirements. A special highlight is the Etanorm SYT pump, a premium product that has proven its worth around the world.

因为独一无二的产品系列以及一流的技术特点,KSB设定了热力流体传输行业的水泵标准. 我们的产品与服务覆盖了整个系统以及安全的要求. 特别的亮点产品是Etanorm SYT, 一个值得全球信赖的产品.

Etanorm SYT is the ideal solution whenever thermal oils have to be conveyed safely and efficiently. The pump is a true all-rounder, equally suited for handling mineral and synthetic thermal oils. Its highly effective venting chamber VenJet® ensures maximum operating reliability. The vent valve (patent pending) makes sure that the gases contained by the fluid handled are separated from the liquid and collected in a separate space. By this method, the gases can be eliminated in a controlled manner by means of a screw plug. One design variant of the SYT with a double mechanical seal and SiC/SiC plain bearings meets the highest demands on operating reliability and safety.

Etanorm SYT是热油需要安全、可靠传输的理想方案. SYT还适用于矿物油以及合成油. 它具有非常高效的VenJet腔体(专利技术)来确保运行的可靠性. 排气阀(专利技术)确保把液体中的气体能被独立分离开. 依靠这种方法, 气体可以在可控的旋钮插头消除掉.SYT的变型产品的多样化设计,有双机械密封和碳化硅/碳化硅的平面轴承设计,满足运行可靠和安全的最高要求。

Your benefits at a glance 客户利益:

Operating reliability 运行可靠

- Highly effective venting chamber ensures optimum venting
高效排气腔确保最佳排气效果
- Confined gaskets 良好的密封
- Design variant with double mechanical seal in tandem arrangement
串联式双机械密封的设计
- Anti-seize carbon plain bearing lubricated by the fluid handled
依靠泵送介质来润滑平面轴承

High reliability 高可靠性

- Sturdy discharge cover designed for high rigidity
- Optimised heat barrier, little wear 优化的隔热层,低磨损

Ease of service 易于维修

- Replaceable casing wear rings 可更换的耐磨环
- Easily dismantled bearing bracket 易于拆卸的轴承托架

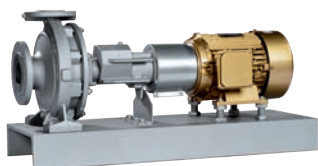
Energy efficiency 节能

- Optimised hydraulic system for high efficiency 优化高效的水力性能
- Each impeller trimmed to match the specified duty point
叶轮切割符合特定工作点要求
- On option, available with KSB PumpDrive and KSB SuPremE® IE4* motor for maximum efficiency
作为选配,可选用KSB的Pumdrive变频器驱动器和KSB超级高效IE4电机

The high-efficiency variant of Etanorm SYT, combined with a KSB SuPremE® IE4* motor and PumpDrive for wall mounting
高效的各型变型的Etanorm SYT,配合KSB超级高效IE4电机和Pumpdrive变频器驱动(墙面安装式)



Etanorm SYT/RSY**



Horizontal, single-stage volute casing pump in back pull-out design to EN 733, DIN 4754, VDI 3033 and DIN 4752
 卧式端吸式单级离心泵后抽式设计,符合EN733, DIN4754, VDI3033和DIN4752标准

For handling mineral and synthetic thermal oils. Can be automated with a PumpDrive variable speed system and highly efficient KSB SuPremE® IE4* motor
 对于处理矿物油和合成油,可以自动化配置Pumpdrive变频器驱动器和KSB超级高效IE4电机。

Technical data 技术数据:

DN	25–300
Q [m³/h]	1900 max.
H [m]	102 max.
p [bar]	16 max.
T [°C]	+350 max.

Etabloc SYT/Etaline SYT**



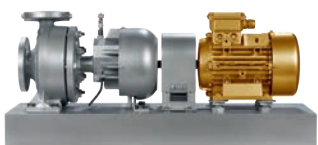
Horizontal, single-stage, close-coupled and/or in-line volute casing pump to EN 733 and DIN 4754
 卧式端吸式紧凑型单级离心泵和管道式离心泵符合EN733和DIN4754标准设计

For handling mineral and synthetic thermal oils. Can be automated with a PumpDrive variable speed system and highly efficient KSB SuPremE® IE4* motor
 对于处理矿物油和合成油,可以自动化配置Pumpdrive变频器驱动器和KSB超级高效IE4电机

Technical data 技术数据:

DN	25–100
Q [m³/h]	280 max.
H [m]	67 max.
p [bar]	16 max.
T [°C]	+350 max.

HPK-L**



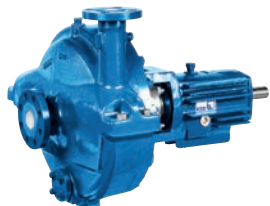
Horizontal, radially split volute casing pump in back pull-out design to ISO 2858/ISO 5199 without external cooling
 卧式端吸后抽式设计符合ISO2858/ISO5199标准,无需外部冷却

For handling mineral and synthetic thermal oils in systems with operating pressures of up to 40 bar. Can be automated with a PumpDrive variable speed system and highly efficient KSB SuPremE® IE4* motor
 对于处理矿物油和合成油系统,工作压力可以达到40公斤.可以自动化配置Pumpdrive变频器和KSB超级高效IE4电机

Technical data 技术数据:

DN	25–250
Q [m³/h]	1130 max.
H [m]	155 max.
p [bar]	40 max.
T [°C]	+240 / +400 max.

RPH



Horizontal, radially split volute casing pump in back pull-out design to API 610, ISO 13709 (heavy duty)
 卧式端吸后抽式设计符合API610, ISO13709标准

Suitable for handling mineral and synthetic thermal oils. For use in systems to API specifications
 适用于处理矿物油和合成油可应用于API特定要求的系统

Technical data 技术数据:

DN	25–400
Q [m³/h]	4150 max.
H [m]	270 max.
p [bar]	110 max.
T [°C]	–70 to +450

All data for 50 Hz operation
 所有数据基于50赫兹的运行工况

*IE4 in accordance with IEC (CD) 60034-30 Ed. 2 IE4电机符合IEC(CD)60034-30Ed标准

**Optional in combination with wall-mounted PumpDrive 可选择采用Pumpdrive变频器控制器(墙面安装式)

RPHmdp



Horizontal, radially split volute casing pump in back pull-out design with magnetic coupling to API 685
 卧式端吸后抽式设计符合API685

Suitable for handling mineral and synthetic thermal oils in systems to API specifications
 适用于处理矿物油和合成油,应用于API特定要求系统

Technical data 技术数据:

DN	25–100
Q [m ³ /h]	300 max.
H [m]	270 max.
p [bar]	51 max.
T [°C]	–40 to +300

Magochem**



Horizontal glandless volute casing pump in back pull-out design with magnetic coupling to ISO 2858 / ISO 5199e
 卧式端吸无密封磁力驱动泵,后抽式设计,符合ISO2858/ISO5199e标准

Pump with magnetic coupling for higher reliability and safety in operation, zero leakage and longer service intervals
 磁力驱动泵在运行中安全与可靠,零泄露和更长的服务间隔期

Technical data 技术数据:

DN	25–200
Q [m ³ /h]	1160 max.
H [m]	162 max.
p [bar]	40 max.
T [°C]	+300 max.

HX / HY (Nikkiso-KSB)



Horizontal seal-less single-stage pump with fully enclosed canned motor, uncooled and cooled ATEX-compliant version available

Suitable for handling thermal oils. Pump with ceramic winding, can be used without cooling for fluids of temperatures up to 350 °C. Hermetical tightness and long service intervals

Technical data 技术数据:

DN	32–100
Q [m ³ /h]	200 max.
H [m]	100 max.
p [bar]	40 max.
T [°C]	+350 max.

All data for 50 Hz operation

*IE4 in accordance with IEC (CD) 60034-30 Ed. 2

**Optional in combination with wall-mounted PumpDrive

First-class technology pays for itself

物有所值的一流技术

The pump is a fundamental component of any heat transfer fluid system. In order to track down the maximum savings potential for today and tomorrow and take full advantage of it within the scope of a holistic system approach, it takes many years of experience and expertise. KSB offers you high-quality automation and drive solutions. The best solution for every application

泵是导热系统的基本组成部分。为了未来最大可能的节约能源，我们需要经过日积月累的经验去改善整体系统方案。KSB提供给您高品质的自动化系统解决方案，适用于每一个行业。

PumpDrive



Optimum operating speeds for maximum savings 最优运行速度为了最大程度节约能源

Variable speed control for maximum energy efficiency, also in heat transfer fluid applications
变速控制可以达到最大程度的节约能源，同样适用于热力传输行业

The PumpDrive speed control unit from KSB ensures optimum operation and hence energy savings, be it mounted on a wall or in a control cabinet. KSB 的 PumpDrive 速度控制器确保最优运行和节约能源，安装在外侧或控制柜中。

KSB SuPremE® IE4* motor



The energy diet for your system 您系统的能源调节师

In variable load operation the most energy efficient drive solution for Etanorm SYT, HPK-L and Magnochem pumps for greatest possible transparency and optimum operation
调速电机运行可以使 Etanorm SYT, HPK-L 和 Magnochem 泵产品达到最佳运行节能状态。

*IE4 in accordance with IEC (CD) 60034-30 Ed. 2

*IE4 符合 IEC (CD) 60034-30 Ed. 2 能效要求

Uncompromisingly reliable: valves made by KSB

绝对可靠：凯士比 (KSB) 制造的阀门

Besides heat transfer fluid pumps, KSB's product portfolio also includes the valves to ideally match our pumps. In numerous applications our heat transfer fluid valves are a dependable parameter, for example where robustness, versatility and precision are concerned. KSB's shut-off and non-return valves ideally complement the pump range, allowing us to offer our customers everything they need. From a single source.

凯士比 (KSB) 的产品系列中, 除了传热流体泵之外, 还包括同我们的泵产品理想匹配的阀门。在各种应用中, 我们的传热流体阀在诸如坚固耐用、多功能性及精确性等方面都表现出可靠的参数。凯士比的关断阀和止回阀理想地补充了泵产品的范围, 使我们以一己之力就能向客户提供他们需要的一切。

Highest temperatures, extreme pressures and the most aggressive of fluids: in heat transfer engineering, valves have to be capable of withstanding the most demanding conditions. For these demanding applications, KSB has the products to cope with every requirement. As far as shut-off valves are concerned, globe valves and butterfly valves made of all common materials are part of our product offer for all temperature and operating pressure ranges. The hydraulically optimised flow paths, the high degree of service and installation friendliness, as well as the uncompromising safeness and reliability of our valves are the result of our many years of expertise in the heat transfer field and the continuous further development of our products.

极端的高温, 极端的高压和侵蚀性最强的流体: 在传热工程中, 阀门必须能够承受最严酷的工况条件。对于这些严酷的应用, 凯士比对每一项要求都有与之对应的产品。就关断阀而言, 所有普通材料制造的截止阀和蝶阀是我们为所有温度和工作压力范围所提供产品的一部分。本公司阀门的液力优化流动路径、高度的维护便利性及安装友好性, 以及绝对的安全性和可靠性, 是我们在热传输领域的多年经验及我们对产品持续研发的成果。

Our valves 本公司阀门

Type of product 产品类型	Design 设计	KSB products 产品	Material 材质		Temperature 温度			Pressure class 压力等级		
			Steel 钢	Nodular cast iron 球墨铸铁	Up to 350°C	Up to 427°C	Up to 450°C	PN 16–25	PN 16–40	PN 20–50
Shut-off valve 关断阀	Bellows-type globe valve 波纹管式截止阀	NORI 40 ZYLB/ZYSB	■				■		■	
		BOA-H		■	■			■		
Non-return valves 止回阀	Butterfly valve 蝶阀	TRIODIS 150–300	■				■	■		
		Lift check valves 升降式止回阀	NORI 40 RXL/RXS	■				■		■
Strainers 过滤阀	Strainers 过滤阀	BOA-R		■	■			■		
		Swing check valves 旋启式止回阀	SERIE 2000 Class 150–300	■			■			■
Strainers 过滤阀	Strainers 过滤阀	NORI 40 FSL/FSS	■				■		■	
		BOA-S		■	■			■		

BOA-H

Flanged end bellows-type globe valve made of nodular cast iron 法兰连接波纹管式截止阀，球墨铸铁

Shut-off valve for absolute safety and reliability in continuous operation, energy efficiency and user-friendliness even at highest temperatures, to ensure optimum handling in heat transfer fluid systems. The short bonnet can be fully insulated and absolutely minimises the valves' heat losses.

这种关断阀在持续工作中绝对安全可靠，能效高，甚至在极端高温下也用户友好，确保在传热流体系统中最佳工作状态。短阀盖可以完全隔离，将阀门的热损耗降低至最低程度

p [bar]	16/25
DN	15–350
T [°C]	–10 to +350



BOA-S

Flanged end, nodular cast iron strainer with standard or fine mesh 法兰连接球墨铸铁过滤阀，标准筛孔或细筛孔

The ideal complement to our BOA valves
这种过滤阀是对本公司BOA阀门的理想补充

p [bar]	16/25
DN	15–300
T [°C]	–10 to +350



NORI 40 RXL/RXS

Flanged or weld end non-return valve made of cast steel 法兰连接或焊接止回阀，铸钢

Non-return valve of proven design for the demanding heat transfer fluid applications. Non-return valve from the NORI 40 series. The non-return valve is the perfect addition to the NORI 40 series of valves

这种止回阀的设计已经过使用实践的证明，适用于苛刻的传热流体应用中。这种止回阀作为NORI 40系列的成员之一，是对NORI 40系列阀门的完美的补充

p [bar]	25/40
DN	10–300
T [°C]	–10 to +450



TRIODIS 150–300

Triple-offset butterfly valve made of cast steel 三偏心蝶阀，铸钢

Fulfills highest standards: the high-performance shut-off valve that offers absolute tightness, absolute safety, absolute reliability, and absolute ease of service

满足最高的标准：高性能关断阀，具有绝对的密封性，绝对的安全性，绝对的可靠性，以及绝对的维护方便性

p [bar]	25
DN	50–600
T [°C]	–10 to +450



BOA-R

Flanged end non-return valve made of nodular cast iron 法兰连接止回阀，球墨铸铁

Non-return valve of time-tested design for demanding applications in heat transfer fluid transport

这种止回阀的设计久经时间的考验，适用于传热流体输送的苛刻应用中

p [bar]	16
DN	15–300
T [°C]	–10 to +350



NORI 40 ZYLB/ZYSB

Flanged or weld end bellows-type globe valve made of cast steel 法兰连接或焊接波纹管式截止阀，铸钢

The NORI 40 bellows-type globe valve for added safety and optimised through-flow in hot applications thanks to double-walled stainless steel bellows, back-up gland packing of pure graphite, fully confined bonnet gasket and hard-faced valve seat

NORI 40波纹管式截止阀，由于有双层壁不锈钢波纹管、纯石墨备用压盖填料、完全密闭阀盖垫片及表面硬化阀座，适用于高温工况下强化安全和优化流通的应用中

p [bar]	25/40
DN	15–300
T [°C]	–10 to +450



NORI 40 FSL/FSS

Flanged or weld end cast steel strainer with standard or fine mesh 法兰连接或焊接铸钢过滤阀，标准筛孔或细筛孔

The perfect addition to the series of NORI shut-off valves. With the NORI 40 types FSS (weld ends) and FSL (flanged ends) KSB has a strainer in its product range that has the same safety and quality features as the tried and tested shut-off valve. Fulfills high safety standards and has a long service life. As an option, the strainer can be supplied with magnetic inserts to filter out metal particles.

这种过滤阀是对NORI关断阀系列的完美补充。有了NORI 40 FSS型（焊接）和FSL型（法兰连接）加盟，凯士比的产品型谱中就有了同其久经考验的关断阀同样安全可靠质量优异的过滤阀产品，既满足高安全标准，又经久耐用。作为一种选项，这种过滤阀供货时还可配磁芯，用于滤出金属粒子

p [bar]	25/40
DN	15–300
T [°C]	–10 to +450



SERIE 2000 Class 150–300

Dual-disc valve, single-piece body made of cast steel 双阀瓣阀，整体式铸钢阀体

The high-performance non-return valve for the toughest of requirements. High degree of mechanical strength and corrosion resistance thanks to the single-piece, maintenance-free cast iron body. Spring-loaded gasket ensures long service life and tightness. Easy to service and install due to low weight and compact design

这种高性能止回阀能够满足最严酷的使用要求。由于阀体为整体式免维护铸铁阀体，机械强度高，耐腐蚀性好。弹簧垫圈确保密封性优异，使用寿命长久。由于设计紧凑，重量轻，因而安装容易，保养方便

p [bar]	20–50
DN	50–600
T [°C]	–196 to +427



Best possible support:
100 percent, 365 days, 24 hours
最佳的支持：百分百，365天，24小时

You can rely on KSB's comprehensive product range, second-to-none engineering know-how and holistic advice and support during the entire life cycle of your system. After all, as your reliable partner we are aware of your circumstances, so that we can support you with our tailored spare parts and service solutions as best we can.

在整个系统的生命周期，您可以依赖于KSB全面的产品系列，首屈一指的工程知识以及全面的建议和支持。毕竟，作为您的可靠合作伙伴，我们了解您的需求，所以我们可以为您提供量身定制的备件及最好的售后服务。



For modern heat transfer fluid systems in trade and industry, the professional and intelligent interaction of many components is an absolute must. KSB supports you at every process stage with the service packages you require and has the answers to all your questions. More than 3000 highly trained service specialists in more than 160 service centres around the world assist you in that and make sure that you can hand over your heat transfer fluid systems according to schedule and ready for operation to your customers. Our specialists are very well trained and their work exceeds the usual certifications and meets the highest standards to SCCP. But that is not all we have to offer: whenever necessary, we work out customised proposals for the modernisation, retrofitting and upgrading of the pumps and other rotating equipment installed in your customer's systems jointly with our experts from the materials laboratory, fluid mechanics and other specialist departments.

These proposals are thoroughly thought out from the start. So, trust the service expertise of KSB and benefit from the added value only a strong partner can provide.

对于现在工业中的热力传输系统，必须确保每个组件之间的专业性及智能化的转化。KSB 在每一个环节为您提供帮助，满足您的需求，解决您的问题。3000多名受过专业培训的服务专家，全球160多个服务中心可以确保为您提供专业性的热力传输系统解决方案，满足您的需求及时间要求。我们的服务专家经过严格培训，他们的工作能力超过通常意义上的资格要求，达到最高标准的SCCP。但是，我们不仅仅提供这些：在必要的时候，我们为您量身定制解决方案。我们的材料，流体力学的以及其他专业部门的专家团队也会服务于您客户系统里面涉及到泵以及其他设备的现代化升级，改造服务。我们在一开始就为您考虑周全。所以，请相信KSB的专业的服务知识，这些物有所值的增值服务只有强大的合作伙伴KSB 为您提供。



上海凯士比泵有限公司
上海市闵行区江川路1400号
上海 200245
电话: +86 21 64302888
传真: +86 21 64301504
Email: ksbpump.shanghai@ksb.com
KSB Shanghai Pump Co., Ltd
1400 Jiangchuan Road, Minhang District
Shanghai 200245
Tel: +86 21 64302888
Fax: +86 21 64301504
E-mail: ksbpump.shanghai@ksb.com

凯士比泵技术服务(天津)有限公司
天津武清开发区泉华路3号
天津 301700
电话: +86 22 59667560
传真: +86 22 59667561
KSB Pump & Valve Technology Service (Tianjing) Co., Ltd
No.3 Quanhua Road, Wuqing Development Area, Tianjing
Tianjing 301700
Tel: +86 22 59667560
Fax: +86 22 59667561

上海分公司
上海市闵行区江川路1400号
上海 200245
电话: +86 21 64302888
传真: +86 21 64301504
Email: ksbpump.shanghai@ksb.com
Shanghai Branch office
1400 Jiangchuan Road, Minhang District
Shanghai 200245
Tel: +86 21 64302888
Fax: +86 21 64301504
E-mail: ksbpump.shanghai@ksb.com

北京分公司
北京市朝阳区雅宝路10号凯威大厦1001室
北京 100020
电话: +86 10 85615768
传真: +86 10 85625769
Email: ksbpump.beijing@ksb.com
Beijing Branch office
Rm 1001A, Gateway Plaza, No. 10 Yabao Road, Chaoyang District
Beijing 100020
Tel: +86 10 85615768
Fax: +86 10 85625769
E-mail: ksbpump.beijing@ksb.com

成都分公司
四川省成都市顺城大街308号冠城广场27楼D-E单元
成都 610017
电话: +86 28 85596661
传真: +86 28 85596200
Email: ksbpump.chengdu@ksb.com
Chengdu Branch office
Unit D-E, 27th Floor, Guangcheng Plaza, No. 308 Shuncheng Avenue, Chengdu
Chengdu 610017
Tel: +86 28 85596661
Fax: +86 28 85596200
E-mail: ksbpump.chengdu@ksb.com

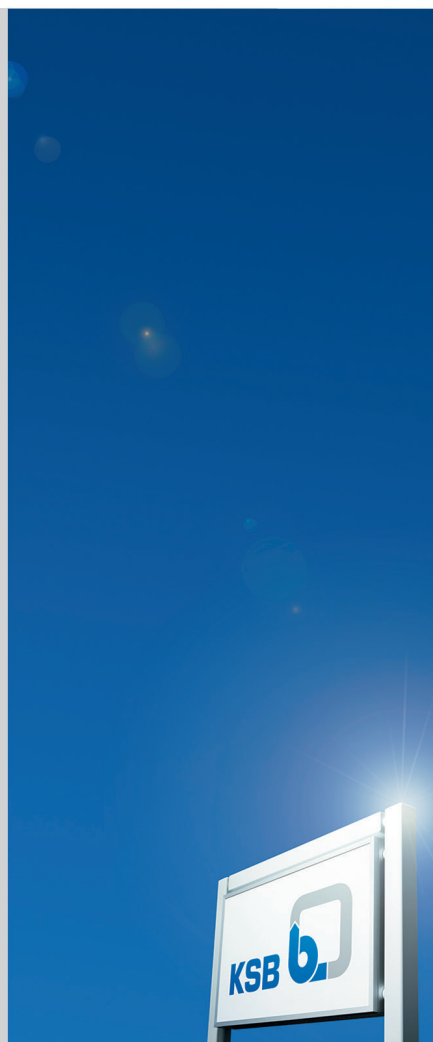
广州分公司
广州市海珠区石围岗路10号地段生物工程大厦11层05-07室
广州 510310
电话: +86 20 29191001
传真: +86 20 29191009
Email: ksbpump.guangzhou@ksb.com
Guangzhou Branch office
Room 1105-1107, 11th Floor, Biotechnology Mansion, Shiliugang Road, Haizhu District
Guangzhou 510310
Tel: +86 20 29191001
Fax: +86 20 29191009
E-mail: ksbpump.guangzhou@ksb.com

上海凯士比泵有限公司广州第二分公司(广州服务车间)
广州市黄埔经济技术开发区瑞和路73号
广州 510310
电话: +86 020 2203 0017
E-mail: ksbpump.guangzhou@ksb.com
KSB Shanghai Pump Co., Ltd. Guangzhou Second Branch (Guangzhou Service Workshop)
No. 73, Ruihe Road, Huangpu Economic-Technological Development Area, Guangzhou
Guangzhou 510310
Tel: +86 20 22030017
E-mail: ksbpump.guangzhou@ksb.com

西安分公司
陕西省西安市-高新三路12号中国人保(陕西)金融大厦1812室
西安 710075
电话: +86 29 88375225
传真: +86 29 88375250
Email: ksbpump.xian@ksb.com
Xi'an liaison office
Room 1812,
PICC(Shanxi) Building,
No.12 Gaoxin Road, Xi'an
Xi'an 710075
Tel: +86 29 88375225
Fax: +86 29 88375250
E-mail: ksbpump.xian@ksb.com

青岛办事处
青岛市香港中路12号丰合广场B座403
青岛 266071
电话: +86 532 80661151
传真: +86 532 80661150
Email: ksbpump.qingdao@ksb.com
Qing Dao liaison office
Room 403, Building B, Fullhope Plaza
No.12 Hong Kong Central Road
Qingdao 266071
Tel: +86 532 8066 1151
Fax: +86 532 8066 1150
E-mail: ksbpump.qingdao@ksb.com

凯士比香港有限公司
香港湾仔卢押道21-25号1801-02室
电话: +852 21471220
传真: +852 21471230
Email: ksb.hongkong@ksb.com
KSB Limited HongKong office
Unit 1801-02, 18/F, The Phoenix
21-25 Luard Road, Wanchai, Hong Kong
Tel: +852 21471220
Fax: +852 21471230
E-mail: ksb.hongkong@ksb.com



联系人



上海凯士比泵有限公司
上海闵行江川路1400号
www.ksb.com.cn
KSB 24小时服务热线: 400-021-8000