

> Our technology. Your success. 我们的技术 您的成功
Pumps · Valves · Service 泵 · 阀 · 服务



The chemistry is right with KSB 凯士比是**工业泵**的正确选择



Elements
of success



The range of **chemical pumps** for limitless applications

适用在任意应用范围内的**工业泵**

No matter whether the fluids are aggressive, corrosive or explosive, our chemical pumps will hold up to any challenge: with a new generation of technically optimised pump type series, reliable valves and the chemical expert's unique know-how.

无论是哪种易燃易爆易腐蚀的流体，我们的工业泵都能完成该挑战：利用新一代技术优化后的泵型，可靠的阀门以及化学专家独特的技术。



Perfect solutions for every application

每个应用上做到完美的解决方案

Besides reliable valves, KSB offers a unique modular pump design system for every application. A broad selection of hydraulic systems, impeller and casing designs, seal variants and a wide choice of materials enable the most demanding of fluids to be handled. Thanks to uniform standards and our widespread sales network, customers around the world can rely on the high quality and excellent service KSB provides. 除了可靠的阀门，KSB 还为每一个应用案例提供专门的泵的模块化设计系统。多选择的水力模型，叶轮和壳体设计，多种机械密封，多种材料选择，这些都为处理各类型的流体提供了便利。由于全球统一的生产及设计标准，世界各地的客户都可以依靠KSB全球的销售网络来得到高品质和优秀的服务。



The perfect combination – with efficient drives and automation

与高效的驱动级和自动化设备的完美结合

Only when combined with highly efficient drives and demand-driven control can the individual components of a plant perform to their full potential. In combination with the KSB SuPremE® IE4* motor, the world's most efficient magnetless pump motor, and the PumpDrive speed control system, they offer extended service life and major energy savings at variable load profiles thanks to more efficient operation.

只有在与高效的驱动机及需要驱动机控制时，才能让整个泵组发挥潜能。结合KSB的专业的SuPremE. IE4电机（目前世界上最高效的电机和 Pump Drive 速度控制系统），他们利用可变的机组速度运行，更高效的现场运作，以延长机组使用寿命和完成主要的能量储蓄。



*IE4 to IEC (CD) 60034-30 Ed.2
IE4 : 参考 IEC (CD) 60034-30 第二版

Zero-leakage handling of chemicals puts heavy demands on a pump and its materials. That is why, besides top quality, KSB actively promotes safety and progress by developing new products and improving existing ones, especially in the chemical industry.

对于要求零泄漏的化学物质，对泵及其所采用的材料有较高的要求。这就是KSB在除了高质量外，还积极促进改善新产品在安全和发展上有更专业的进步，尤其在化工行业。



FluidFuture®: 25% reduction in energy costs in chemical applications

FluidFuture®: 在化工领域减少25%的能源成本

Jointly with KSB, the international chemical company Solvay Fluor GmbH has modernised its recooling plant for producing hydrogen fluoride. Using the FluidFuture® energy efficiency concept, old, oversized pumps were identified and replaced with efficient and optimally matched pump sets. The result: an approximately 25% decrease in energy costs representing about € 20,700 in savings per year.

联合KSB，国际性化工集团苏威公司，一家现代化的氟化氢制造的二次冷却装置。使用了流体前景，注重能源效率的概念，采用了高效的，优化后的更适合的泵型替代了老的，超大的泵型。该项目的结果是，每年为客户在能源成本上节省25%，约合20,700.00欧元。

Learn more about energy savings
with FluidFuture® at
www.ksb.com/fluidfuture



MegaCPK – the best standardised chemical pump in its class

MegaCPK – 最好的标准化工泵

A milestone in standardised chemical pumps: MegaCPK is our unique all-in package that offers energy efficiency, a wide choice of variants and operating reliability – thereby setting the basis for numerous standards.

标准化工泵的里程碑：MegaCPK是独特整体式的泵组，提供高效率，多种选择，可靠的操作性，从而设置众多的基础标准。

The proven standardised chemical pump to EN 22858, ISO 2858, ISO 5199 and Directive 94/9/EC (ATEX) finds its application especially in handling aggressive liquids in the chemical and petrochemical industries.

泵的生产及设计标准EN 22858, ISO 2858, ISO 5199和指令 94 / 9 / EC (ATEX)被广泛运用并证明的，用于在化工和石油化工行业输送活性液体。

Energy efficiency 高效率

Perfectly matched to the pump's output – maximum energy savings:

泵的性能，与下面内容完全匹配—最大限度的节约能源：

- Extended range of sizes: identical operating data and conditions are achieved with smaller pump sizes
- Impeller trimming for energy savings of up to 10 %
- 扩展了型号的范围：在相同的操作数据和条件的情况下，可以选择更小一个型号
- 利用叶轮的切割达到最多10%的能源节约

Wide range of variants

大范围内进行多种变型

Thanks to its versatility, MegaCPK can be optimally adapted to the customers' needs

and various fluids:

由于它的多功能性，Mega CPK可以最大程度的适应客户的台区域，以及输送多种流体：

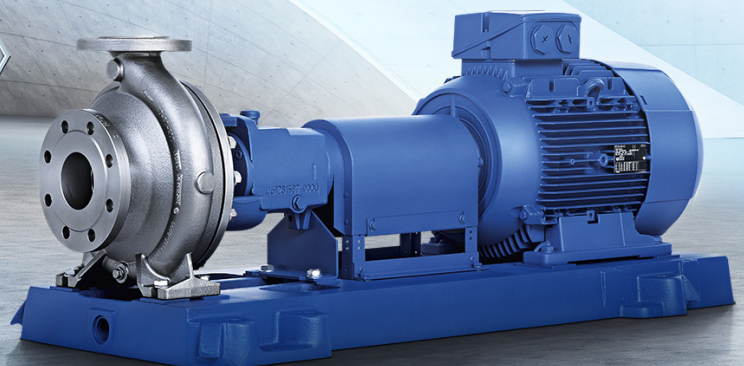
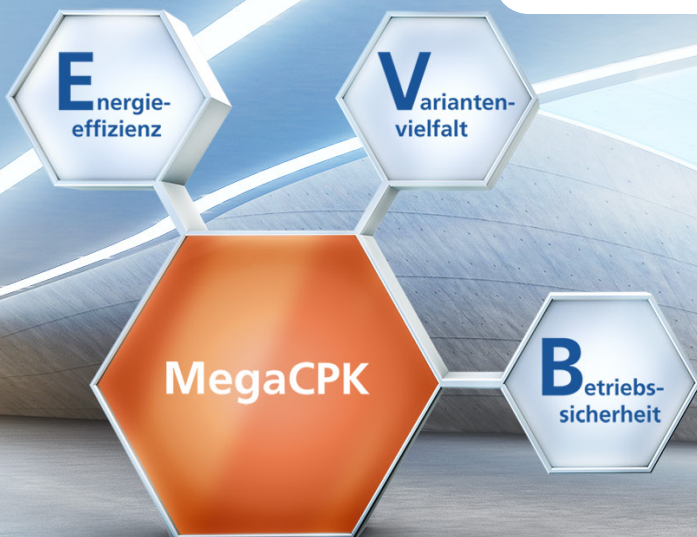
- Comprehensive modular design system with a variety of pump sizes, materials and components
- Standard dimensions for subsequent replacement of components made of other materials
- Gland packing, standardised mechanical seal or cartridge seal
- “Medium duty” bearing bracket design with a cylindrical roller bearing as a radial bearing and an angular contact ball bearing as a fixed bearing
- Oil or grease lubrication
- Cylindrical or conical casing cover for fluids with high solids content
- 各种泵的尺寸，材料和组件，符合模块化设计系统
- 采用标准的尺寸，为后续更换其他的材料组件提供了方便
- 多种密封型式：填料，标准机械密封或者集装式机械密封
- 中型轴承架设计：圆柱滚子轴承径向轴承和角接触球轴承固定轴承
- 油润滑或者脂润滑
- 圆柱形或者圆锥形泵盖（用于输送流体中高含量的固体颗粒）

Operating reliability 可靠的操作性

Right from the start, MegaCPK has been designed for maximum operating reliability: from design之初, Mega CPK就是按照最大的操作可靠性来设计的：

- Back pull-out design for quick and easy maintenance
- Compliance with European ATEX Directives
- Version with coolable bearing bracket for fluid temperatures in excess of 200 °C
- Heatable variant for stagnant or cold fluids
- Replaceable casing wear ring / impeller wear ring
- Optional shaft sleeve for less wear
- Increased rigidity
- Minimal axial thrust
- Low NPSH value
- 后抽式设计，有利于快速和方便的维护
- 遵守欧洲ATEX指令
- 带冷却的轴承座可承受的流体温度超过200°C
- 可加热的设计用于输送易凝固或者需要被加热的流体
- 可更换的泵体磨损环和叶轮磨损环
- 可选择轴套以降低磨损
- 增加了刚度
- 实现了最小的轴向推力
- 低汽蚀余量

www.ksb.com/megacpk





Magnochem – the mag-drive pump with endless possibilities

Magnochem – 拥有无限可能性的磁力驱动泵

Able to take on every challenge: with new operating modes for critical fluids and the magnetic coupling's comprehensive modular design system, seal-less Magnochem incorporates the latest unique developments.

能够接受每一种挑战：为输送关键液体和磁力耦合的综合模块化设计系统的新操作模式,无密封的 Magnochem包含了最新独特的发展趋向。

The versatile mag-drive pump to ISO 2858/ISO 5199 is particularly suitable for handling toxic, explosive or valuable liquids in the chemical, petrochemical or general industries. With its ATEX approval, it ensures maximum operating reliability along with maximum efficiency and zero leakage.

ISO2858 / ISO 5199标准的磁力驱动泵非常适合处理化工或石油化工或基础工业里有毒易爆或者价值较高的液体。在得到ATEX的批准后,它确保了最大限度的操作可靠性,最高的效率以及零泄露。

Energy efficiency 高能效

The magnetic coupling's comprehensive modular design system allows Magnochem to be tailored to the optimum operating point: 磁力耦合联轴器的模块化设计将会使Magnochem运行在最优操作点:

- Different magnetic coupling diameters and lengths for each hydraulic system size
- Eddy current-free ceramic containment shroud
- 每一个水力模型可以对应不同的磁力耦合联轴器直径和长度
- 灵活匹配的陶瓷型式隔离套

Wide range of variants 大范围内进行多种变型

With its two new operating modes, Magnochem can safely circulate even the most critical of fluids as a coolant or lubricant. The new auxiliary impeller prevents pressure drops in the rotor space so that the fluid handled does not evaporate.

在两种运行模式下, Magnochem能够安全的输送最关键的液体,比如冷却剂或者润滑剂。新设计的辅助叶轮能够保证在压力下降时,流体不发生蒸发。

Innovative technology 创新技术

Using cutting-edge manufacturing methods, KSB continually develops new designs: 使用先进的制造方法, KSB 持续开发着新设计:

- Auxiliary impeller for new operating modes
- Modular design principle for magnetic coupling
- Anti-swirl baffle to reduce potential vortices
- Back-to-back plain bearing arrangement for minimum bearing load and improved fatigue strength
- Optional leakage barrier
- Silicon carbide plain bearings with DLC coating
- Ceramic containment shroud
- 为新的操作模式所设计的辅助叶轮
- 模块化设计的磁力耦合联轴器
- 防涡流挡板,以减少潜在的漩涡
- 背靠背的轴承布置,使轴承承受最低负荷,提交疲劳强度
- 可选项: 泄露格栅
- 带DLC涂层的碳化硅滑动轴承
- 陶瓷材料的隔离套

www.ksb.com/magnochem

Full chemical range – pumps and valves in perfect combination

全化工行业—泵及阀门的完美结合

Every plant places specific demands on its components and their characteristics. That is why, for every application, KSB offers the perfect solution that meets the highest safety standards: with our full product range consisting of different pump series and various types of butterfly and globe valves that reliably shut-off even the most critical fluids.

每一个装置在配置和特点上都有其具体的要求。这就是为什么KSB能够对于每一个应用都提供完美的解决方案，以满足最高级别的安全标准：即便输送最严苛的夜里，可以利用我们完整的产品系列和各种配合产品组合的蝶阀和球阀。

MegaCPK*

Standardised chemical pump with two bearing bracket variants
标准化工泵（带有两种轴承支架型式）

DN 25–250
Q [m³/h] 1160 max.
H [m] 162 max.
p [bar] 25 max.
T [°C] +400 max.



Magnochem*

Standardised chemical mag-drive pump
标准磁力驱动化工泵

DN 25–160
Q [m³/h] 1160 max.
H [m] 162 max.
p [bar] 40 max.
T [°C] –90 to +300



Multitec*

High-pressure ring-section pump
环断式高压泵

DN 32–150
Q [m³/h] 850 max.
H [m] 630 (1000) max.
p [bar] 63 (100) max.
T [°C] –10 to +200



RPH/RPHmdp

OH2 process pump to API 610/
standardised chemical mag-drive pump
to API 685
符合 API 610, OH2 型式的流程泵/
符合 API 685 标准的磁力驱动化工离心泵

DN 25–400
Q [m³/h] 4150 max.
H [m] 270 max.
p [bar] 51 max.
T [°C] +450 max.



DN 25–100
Q [m³/h] 300 max.
H [m] 270 max.
p [bar] 51 max.
T [°C] +300 max.



KWP

Centrifugal pump with channel impeller
配有无堵塞叶轮的离心泵

DN 40–900
Q [m³/h] 15000 max.
H* [m] 100 max.
p* [bar] 10 max.
T* [°C] –40 to +120
(+280 max.)



* Higher ratings on request

* Also available with PumpDrive speed control system and KSB SuPremE® IE4 motor

All data for 50 Hz operation

NORI 40 ZXLB/ZXSB NORI 40 ZXLBV/ZXSBV

Maintenance-free bellows-type globe valve
免维护波纹管截止阀

p [bar] 40 max.
DN 10–200
T [°C] –10 to +450



NORI 50 ZXSV

Globe valve with gland packing
填料密封截止阀

p [bar] 500 max.
DN 10–65
T [°C] –10 to +650



STAAL 40 AKD/AKDS

Flanged or butt weld end gate valve with bolted bonnet
带螺栓连接阀盖的法兰或对焊端闸阀

p [bar] 40 max.
DN 50–600
T [°C] –10 to +400



STAAL 100 AKD/AKDS

Flanged or butt weld end gate valve with bolted bonnet
带螺栓连接阀盖的法兰或对焊端闸阀

p [bar] 100 max.
DN 50–500
T [°C] –10 to +550



KE

Centred-disc butterfly valve
中线型蝶阀

p [bar] 10 max.
DN 40–600
T [°C] –20 to +200



AKR/ACRIS

Butterfly valve with PFA
衬PFA蝶阀

p [bar] 10 max.
DN 25–600
T [°C] –30 to +160



ISORIA 10

Centred-disc butterfly valve with elastomer liner
中线型衬胶蝶阀

p [bar] 10 max.
DN 40–1000
T [°C] –10 to +200



DANAIS 150

Double-offset butterfly valve
双偏心蝶阀

p [bar] 25 max.
DN 1000
T [°C] –50 to +260





AMTRONIC and SMARTRONIC – safety and precision for valves 保证阀门的安全和精度

Valve automation plays a major role in the performance, reliability and overall efficiency of a plant – in a particularly space-saving way. With perfectly matched open and closed-loop control units from the specialist for innovative valve solutions.

阀门自动化在一台设备的性能、可靠性和总体效率方面 – 以一种特别节省空间的方式 – 起着主要的作用。专家设计的由完美匹配的开环和闭环控制单元构成创造性的阀门解决方案。

In line with its reliable valves, KSB offers a comprehensive range of smart automation technologies. The AMTRONIC on/off control unit and the SMARTRONIC positioner handle your process data with care and precision, controlling valves and enhancing performance. With their space-saving design, they simplify the installation as well as the maintenance of the entire range of valves in a plant.

凯士比 (KSB) 在提供其可靠的阀门的同时, 还提供品类齐全的智能自动化技术。AMTRONIC 开/关控制单元和SMARTRONIC定位器仔细而精确地处理您的过程数据, 对阀门进行控制并增强其性能。它们的节省空间的设计, 使一台设备中所有阀门的安装及维护变得简便易行。



AMTRONIC on/off control unit
AMTRONIC开/关控制单元



Intelligent SMARTRONIC positioner
智能型SMARTRONIC定位器

上海凯士比泵有限公司
上海市闵行区江川路1400号
上海 200245
电话: +86 21 64302888
传真: +86 21 64301504
Email: ksbpump.shanghai@ksb.com
KSB Shanghai Pump Co., Ltd
1400 Jiangchuan Road, Minhang District
Shanghai 200245
Tel: +86 21 64302888
Fax: +86 21 64301504
E-mail: ksbpump.shanghai@ksb.com

凯士比泵技术服务(天津)有限公司
天津武清开发区泉华路3号
天津 301700
电话: +86 22 59667560
传真: +86 22 59667561
KSB Pump & Valve Technology Service (Tianjing) Co., Ltd
No.3 Quanhua Road, Wuqing Development Area, Tianjing
Tianjing 301700
Tel: +86 22 59667560
Fax: +86 22 59667561

上海分公司
上海市闵行区江川路1400号
上海 200245
电话: +86 21 64302888
传真: +86 21 64301504
Email: ksbpump.shanghai@ksb.com
Shanghai Branch office
1400 Jiangchuan Road, Minhang District
Shanghai 200245
Tel: +86 21 64302888
Fax: +86 21 64301504
E-mail: ksbpump.shanghai@ksb.com

北京分公司
北京市朝阳区雅宝路10号凯威大厦1001室
北京 100020
电话: +86 10 85615768
传真: +86 10 85625769
Email: ksbpump.beijing@ksb.com
Beijing Branch office
Rm 1001A, Gateway Plaza, No. 10 Yabao Road, Chaoyang District
Beijing 100020
Tel: +86 10 85615768
Fax: +86 10 85625769
E-mail: ksbpump.beijing@ksb.com

成都分公司
四川省成都市顺城大街308号冠城广场27楼D-E单元
成都 610017
电话: +86 28 85596661
传真: +86 28 85596200
Email: ksbpump.chengdu@ksb.com
Chengdu Branch office
Unit D-E, 27th Floor, Guangcheng Plaza, No. 308 Shuncheng Avenue, Chengdu
Chengdu 610017
Tel: +86 28 85596661
Fax: +86 28 85596200
E-mail: ksbpump.chengdu@ksb.com

广州分公司
广州市海珠区石围岗路10号地段生物工程大厦11层05-07室
广州 510310
电话: +86 20 29191001
传真: +86 20 29191009
Email: ksbpump.guangzhou@ksb.com
Guangzhou Branch office
Room 1105-1107, 11th Floor, Biotechnology Mansion, Shiliugang Road, Haizhu District
Guangzhou 510310
Tel: +86 20 29191001
Fax: +86 20 29191009
E-mail: ksbpump.guangzhou@ksb.com

上海凯士比泵有限公司广州第二分公司(广州服务车间)
广州市黄埔经济技术开发区瑞和路73号
广州 510310
电话: +86 020 2203 0017
E-mail: ksbpump.guangzhou@ksb.com
KSB Shanghai Pump Co., Ltd. Guangzhou Second Branch (Guangzhou Service Workshop)
No. 73, Ruihe Road, Huangpu Economic-Technological Development Area, Guangzhou
Guangzhou 510310
Tel: +86 20 22030017
E-mail: ksbpump.guangzhou@ksb.com

西安分公司
陕西省西安市-高新三路12号中国人保(陕西)金融大厦1812室
西安 710075
电话: +86 29 88375225
传真: +86 29 88375250
Email: ksbpump.xian@ksb.com
Xi'an liaison office
Room 1812,
PICC(Shanxi) Building,
No.12 Gaoxin Road, Xi'an
Xi'an 710075
Tel: +86 29 88375225
Fax: +86 29 88375250
E-mail: ksbpump.xian@ksb.com

青岛办事处
青岛市香港中路12号丰合广场B座403
青岛 266071
电话: +86 532 80661151
传真: +86 532 80661150
Email: ksbpump.qingdao@ksb.com
Qing Dao liaison office
Room 403, Building B, Fullhope Plaza
No.12 Hong Kong Central Road
Qingdao 266071
Tel: +86 532 8066 1151
Fax: +86 532 8066 1150
E-mail: ksbpump.qingdao@ksb.com

凯士比香港有限公司
香港湾仔卢押道21-25号1801-02室
电话: +852 21471220
传真: +852 21471230
Email: ksb.hongkong@ksb.com
KSB Limited HongKong office
Unit 1801-02, 18/F, The Phoenix
21-25 Luard Road, Wanchai, Hong Kong
Tel: +852 21471220
Fax: +852 21471230
E-mail: ksb.hongkong@ksb.com

联系人



上海凯士比泵有限公司
上海闵行江川路1400号

www.ksb.com.cn

KSB 24小时服务热线: 400-021-8000

