



# Technology that **makes its mark**

► Our technology. Your success.

Pumps • Valves • Service





# KSB Australia

## Company Profile & Capabilities

KSB Australia Pty Ltd  
January 2021



# KSB Group About Us

KSB is one of the world's leading manufacturers of pumps and valves, providing a comprehensive range of service offerings.

With its 39 production sites in 15 countries, as well as further assembly sites and a tightly knit global sales and service network, KSB staff are active in more than 100 countries.



■ KSB production sites

■ KSB sales and service sites



## KSB Australia About Us

KSB Australia combines high-quality products and qualified employees to provide tailored solutions to customers across the country.

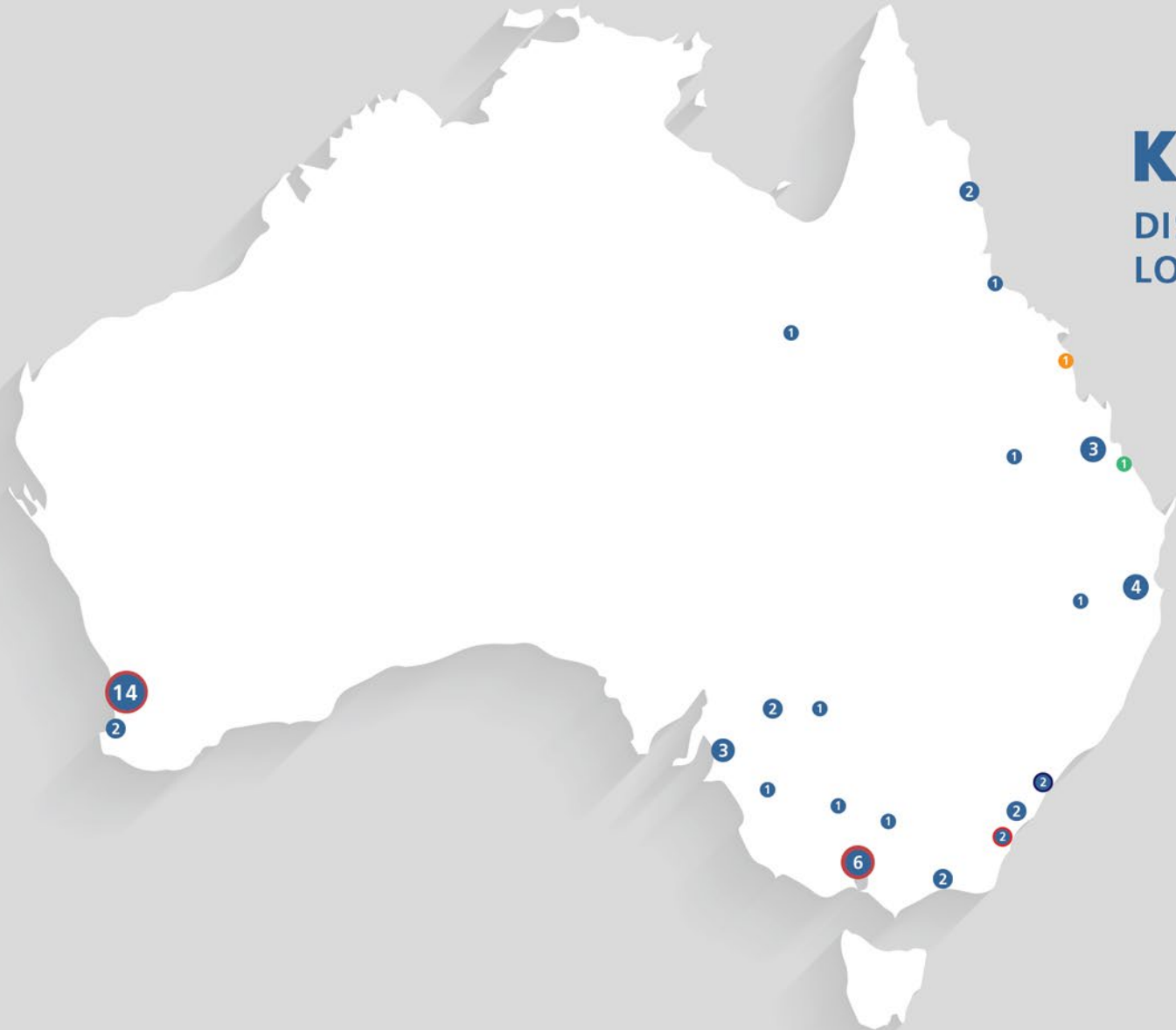
The two main production facilities located on the east and west coast of Australia house a stock range of:

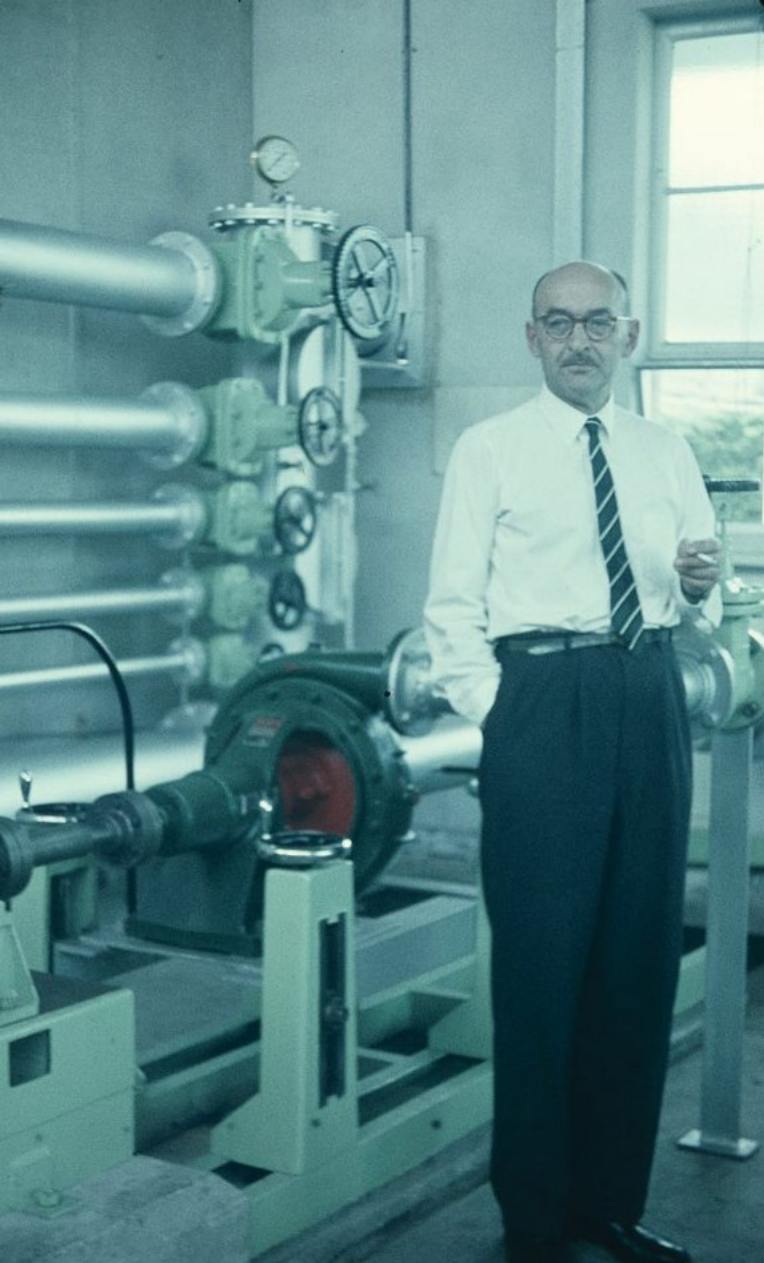
- End Suction Pumps (DIN & ISO standards),
- Vertical Multistage Pumps,
- Submersible Sewage Pumps,
- Submersible Borehole pumps,
- Extensive range of genuine spare parts, including GIW Slurry Pump and KSB Mechanical Seals.

■ KSB production sites

■ KSB Sales Personnel Locations

- FLS Pumps
- Newcastle Pump & Water
- R&T Pumps
- Sunfam
- Nutrien Water
- BKB Pumping Solutions





## KSB Australia

# Experts with a local history

- **1939 Foundation**  
Ajax Pump Work was established in Tottenham, Victoria.
- **1988 Forrers Acquisition**  
Ajax Pumps acquired the Forrers company (est. 1921), manufacturers in Ipswich, Queensland, specialising in submersible sewage pumps.
- **1988 GIW Inc. Acquisition**  
KSB Group acquired GIW Inc. Grovetown, USA. This acquisition marks KSB's entry into the slurry pump market.
- **1991 KSB Ajax**  
KSB Ajax was formed, bringing together KSB and Ajax Pumps.
- **1993 Manufacturing**  
Manufacturing moved to a state-of-the-art premises in Tottenham, Melbourne.
- **2001 Forrers Move**  
The Forrers facility moved to Tottenham, Victoria.
- **2007 KSB Australia,**  
KSB Ajax Pumps changed its name to KSB Australia Pty Ltd.
- **2011 Water & Waste Water Competence Centre**  
KSB Australia moves to its dedicated Water and Waste Water Competence Centre to Bundamba, Queensland.
- **2015 New Western Australia Facility**  
KSB Australia opened a new purpose-built facility to service Western Australia.
- **2020 New Pump Testing Facility, Hope Valley, WA**  
A state of the art testing facility was commissioned in Hope Valley, WA.



## KSB Australia **Bundamba**

KSB Bundamba is spread over 8,800m<sup>2</sup>, and includes a 2,000m<sup>2</sup> workshop, with a large training facility.

### **Bundamba Test Facility:**

- Dry-install and submersible pump test capability.
- Up to 250kW power rating (50Hz synchronous speed).
- Quality Endress + Hauser and Yokogawa measuring equipment.



**Bundamba Stock Holdings = \$5.4M**



## KSB Australia **Hope Valley**

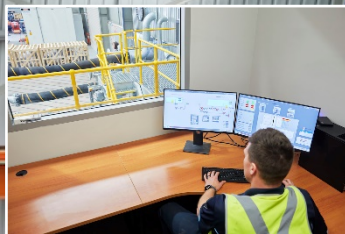
KSB Hope Valley is spread over 10,300m<sup>2</sup>, and includes a 1,200m<sup>2</sup> workshop, with a large training facility.

**Hope Valley Stock Holdings = \$5.2M**

**Hope Valley Test Facility**







# KSB Australia Hope Valley

## Hope Valley Test Facility

- Separated performance test circuits for both Clean and Waste Water testing
- Clean Water test circuit with flow rates up to 1500 litres per second at 4000 kpa pressure
- Clean Water test circuit equipped with a maximum discharge pipe diameter of 600mm
- Waste Water test circuit with flow rates up to 200 litres per second at 1400 kpa pressure
- Waste Water test circuit equipped with a maximum discharge pipe diameter of 250mm
- Up to 630 kW power rating, full range power supplied through Variable Speed Drives
- Fully integrated control, testing, condition monitoring and data acquisition through Rockwell Automation (Allen Bradley)
- Remote witness testing capabilities



## KSB Australia **Our People**

Located nationally, our team of highly qualified project engineers, experienced sales personnel, knowledgeable product managers, reliable service technicians and first-class fabrication team are ready to provide a tailored solution for your next project.



## KSB Australia Management Team

**Dave Alexander**, Managing Director  
(26 Years with KSB)

**Brent Jooste**, Financial Controller  
(3 Years with KSB)

**Dorel Strungaru**, HR Manager  
(10 Years with KSB)

**Brett Lewis**, Mining & KSB SupremeServ  
General Manager  
(26 Years with KSB)

**Sarel Erasmus**, Water & Wastewater  
General Manager  
(20 Years with KSB)

KSB Australia  
**Market Segments**

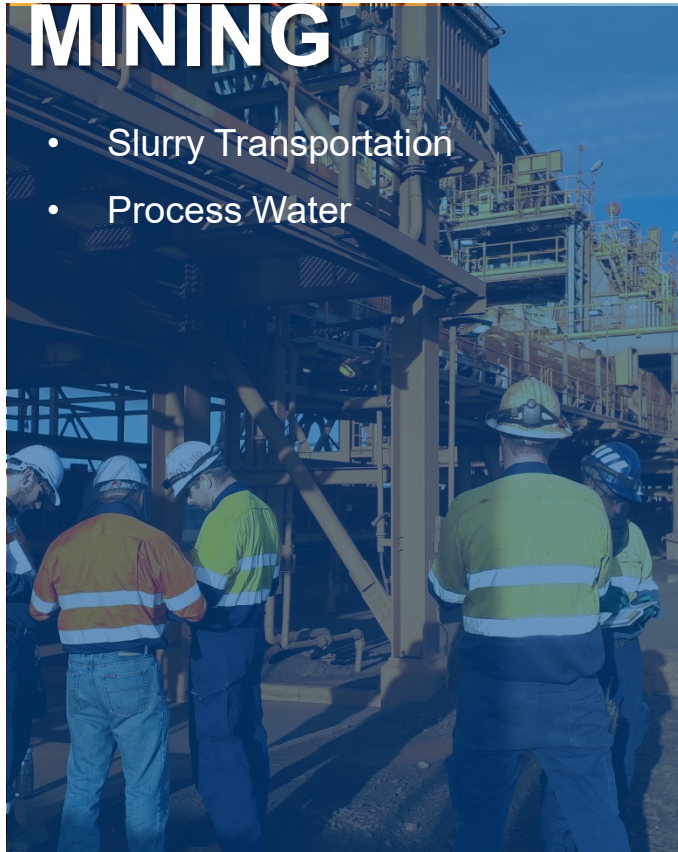


# KSB Australia

## Market Segments

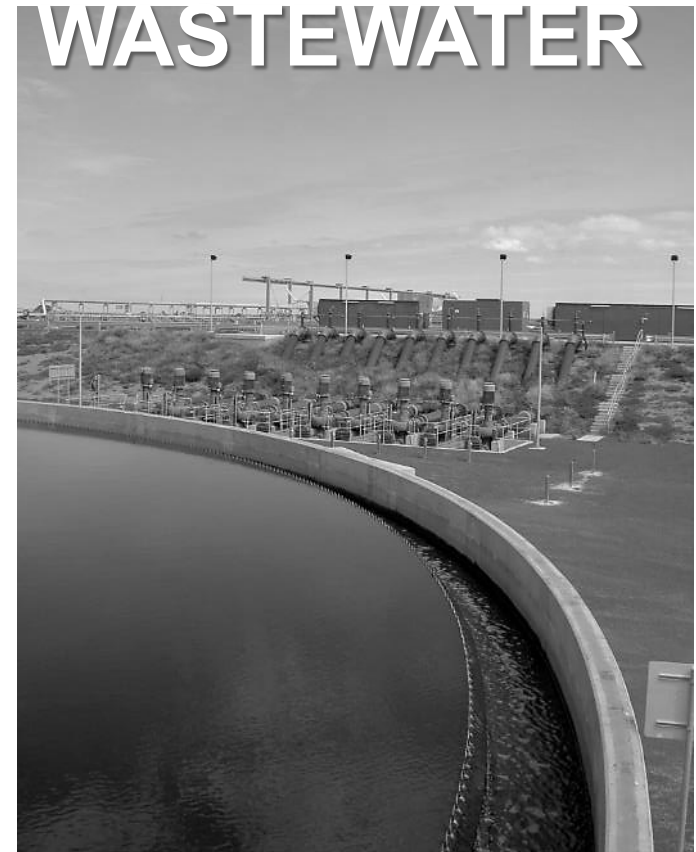
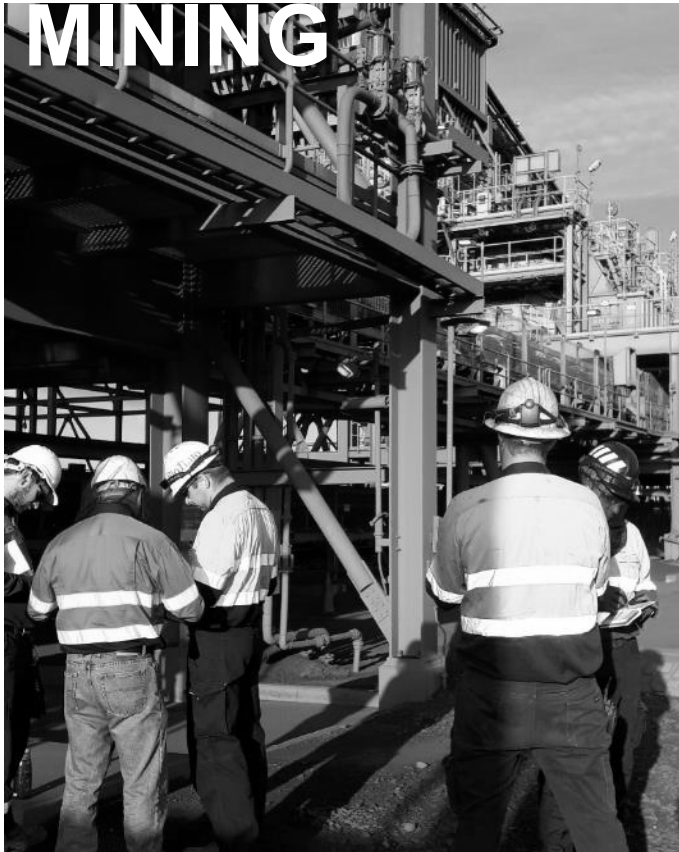
### MINING

- Slurry Transportation
- Process Water

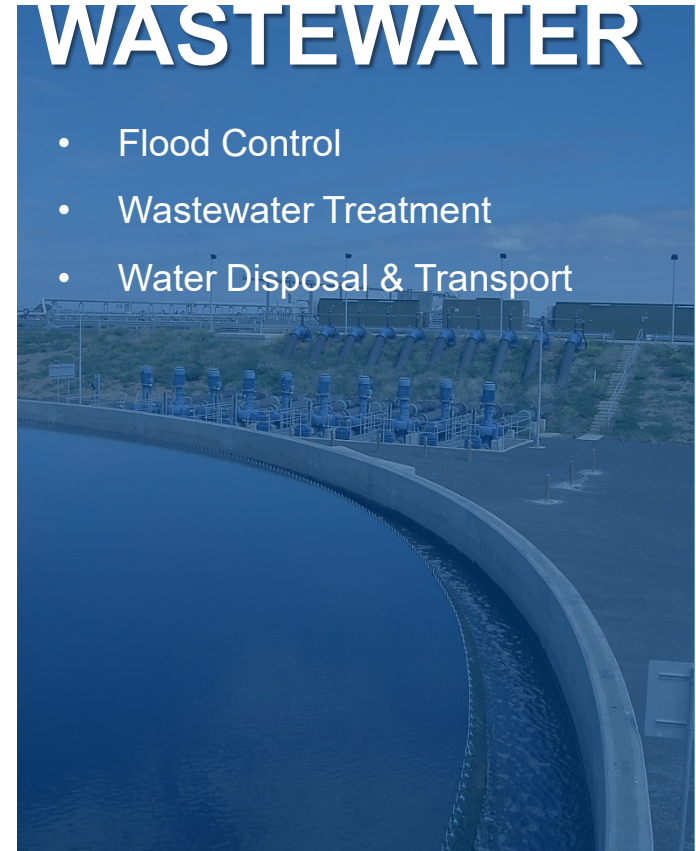
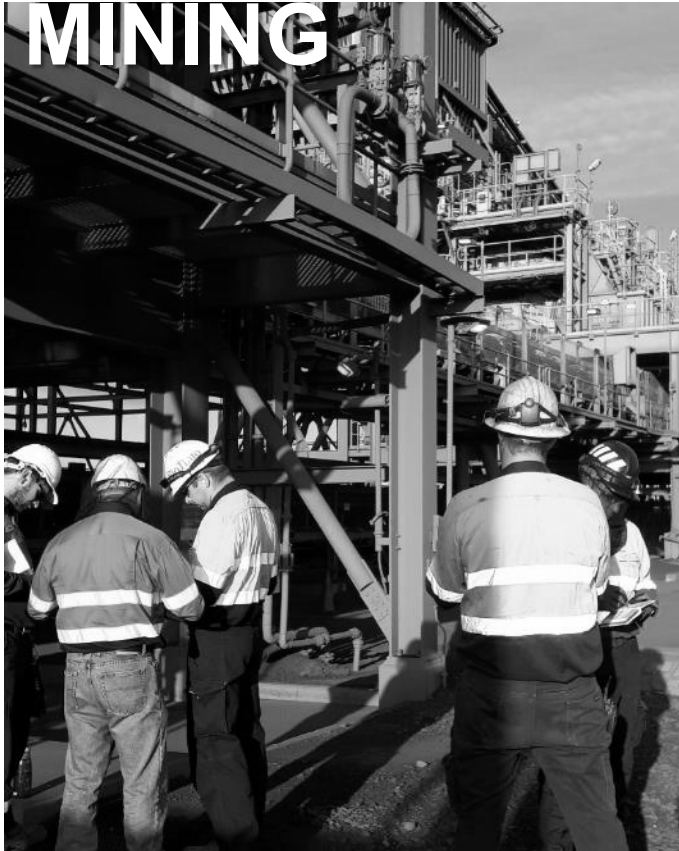
A photograph of several mining workers wearing hard hats and high-visibility safety vests, standing in a large industrial structure with complex piping and machinery. The image has a blue tint.

# KSB Australia

## Market Segments



# KSB Australia Market Segments



KSB Australia  
**Market Segments**





# KSB Australia

## Market Segments

# ENERGY

- Renewable Energy
- Fossil Power Plants
- Nuclear Power Plants




# BUILDING SERVICES



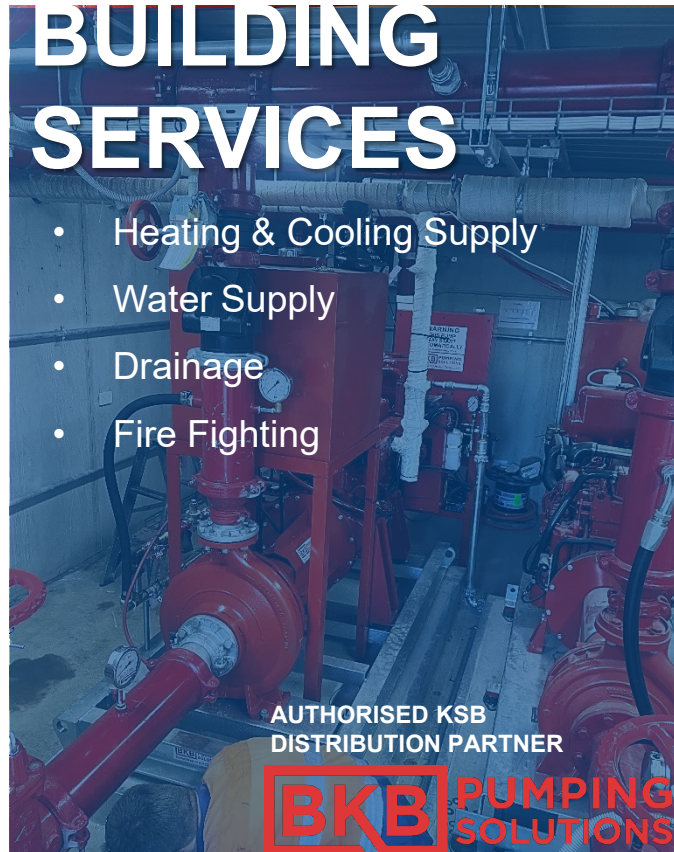
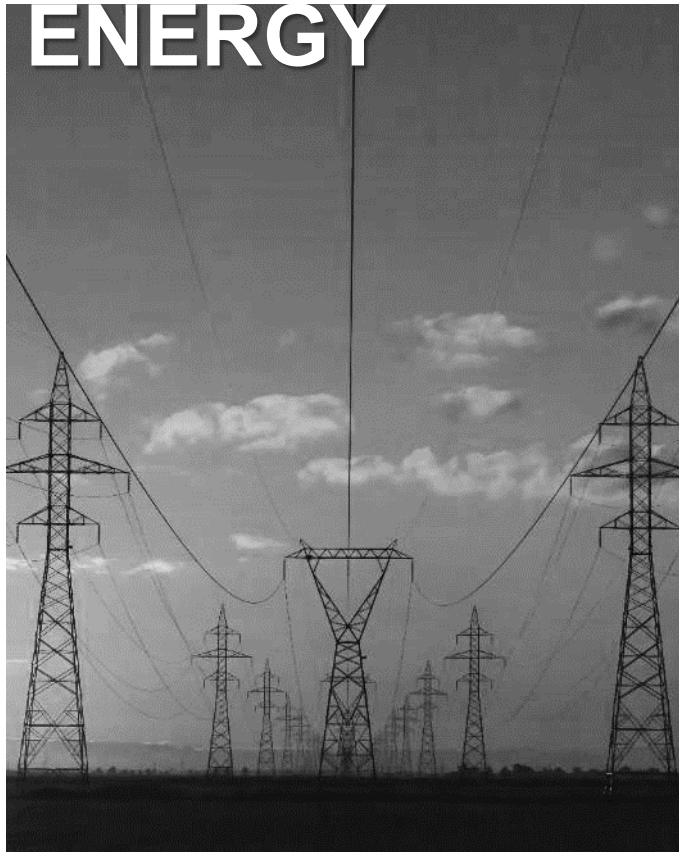
**BKB** PUMPING SOLUTIONS

# INDUSTRY



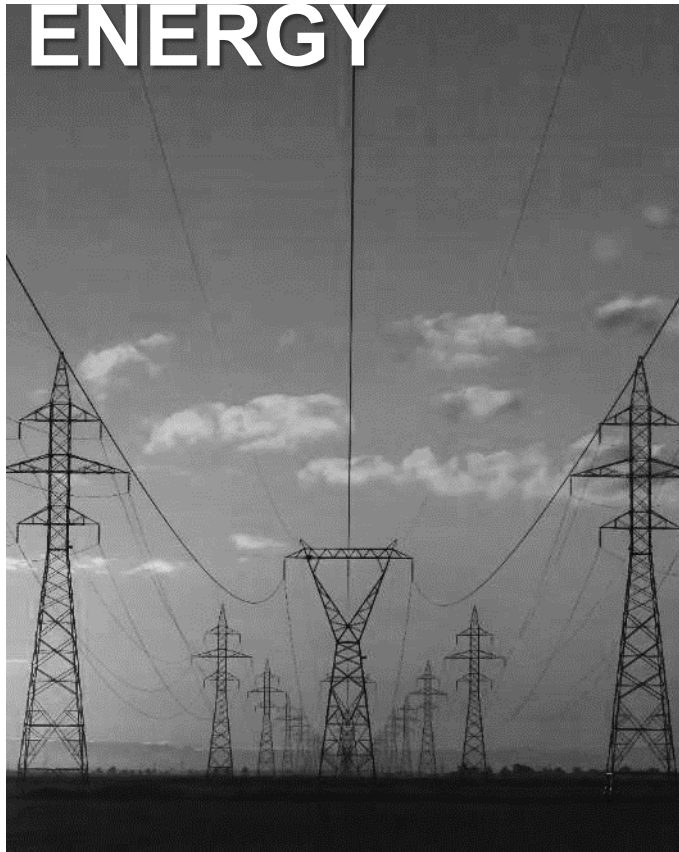
# KSB Australia

## Market Segments



# KSB Australia

## Market Segments





# KSB SupremeServ

One Service – All Included

**KSB** Supreme**Serv**



Single-source supplier

# KSB – your partner for the entire product life cycle

## 1. Products / Systems

- Technical consultancy
- Pumps
- Valves
- Complete system solutions
- Customised aggregates
- Numerous applications



Single-source supplier

# KSB – your partner for the entire product life cycle



## 2. Commissioning

- Inspection of supplied pump sets
- Analysis of system conditions
- Monitoring of all installation work
- Checks for leakage
- Correct alignment of pump sets using laser technology
- Functional check of installed measuring equipment
- Training/instruction of operating staff
- Conservation measures in case of delayed commissioning



Single-source supplier

# KSB – your partner for the entire product life cycle



### 3. Operation

- Inspection service
- Inventory management
- Extension of warranty period
- Maintenance inspection management
- Framework agreements like TPM® Total Pump Management
- Efficiency analyses with SES System Efficiency Services or PumpMeter
- Operation analysis with KSB Guard

Single-source supplier

# KSB – your partner for the entire product life cycle



#### 4. Repair

- Repair on site or at one of KSB's service centres
- 24-h emergency service
- Worldwide service network
- Retrofitting – as an alternative to buying new
- Spare parts of original manufacturer quality
- Services and Reverse engineering – especially for non-KSB parts



Single-source supplier

# KSB – your partner for the entire product life cycle



## 5. Decommissioning / Rehabilitation

- Rebuilding measures due to changing conditions
- Modernisation solutions
- Upgrades of products
- Expert decommissioning of entire systems
- Conservation measures
- Quick and safe removal of components
- Environmentally safe disposal or recycling of waste
- Planning and project engineering of new systems





# **Digitalisation - KSB Australia**

KSB Guard | Sonolyser | MyFlow Technology | KSB EasySelect



## Pumps installed

### Pumping station 1B

#### Pump 3

Functional location: Area 2

#### Pump 11

Functional location: Area 4

#### Pump 12

Functional location: Area 4

### Boiler house 2

#### Pump 1

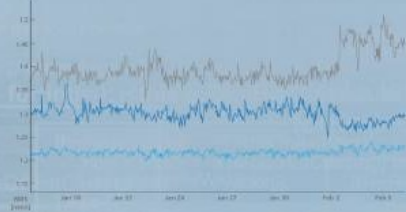
Functional location: Area 1

#### Pump 2

Functional location: Area 1

## Mean vibration velocity

### Pump 2, boiler house 2



## Messages

**!** Pump 3, pumping station 1B  
Mean vibration velocity above warning limit  
Just now

## Operating hours counter

### Pump 1, boiler house 2

**Pump (total)**  
22,000 h

**Since the last bearing lubrication**  
7,800 h

## Maintenance history

### Pump 12, pumping station 1B

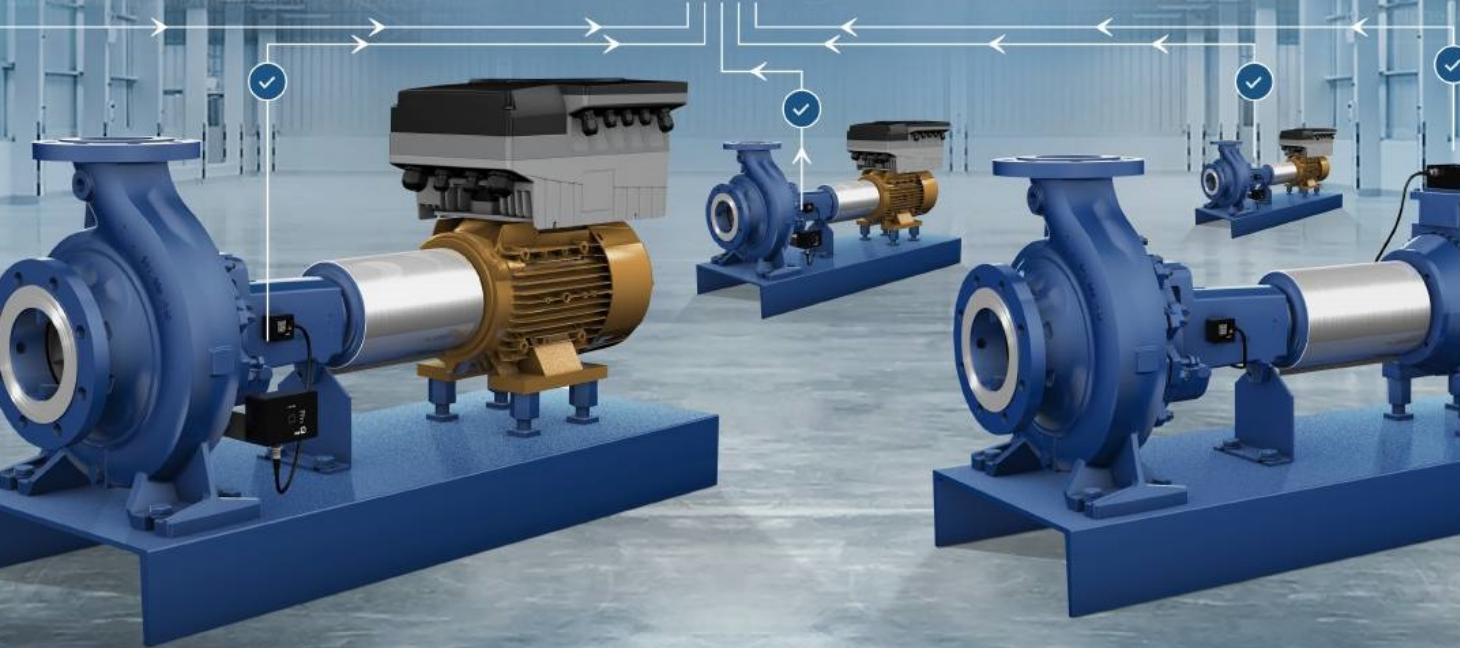
**Time of documentation:** 21/01/2018 17:15  
**Diagnosis:** Alarm  
**Type:** Vibration  
**Status:** Maintenance performed  
**Component concerned:**  
Pump end pump bearing  
**Activity:** Replacement

**Time of documentation:** 18/10/2017 09:34  
**Diagnosis:** Warning  
**Type:** Vibration  
**Status:** Maintenance performed  
**Component concerned:**  
Pump end pump bearing  
**Activity:** Lubrication

# Digitalisation KSB Guard

All pump data is checked in parallel without the need to be on site.

- Hourly monitoring of the pumps' status
- Deviations are immediately reported
- Straightforward installation
- Specific status data help you to plan maintenance intervals



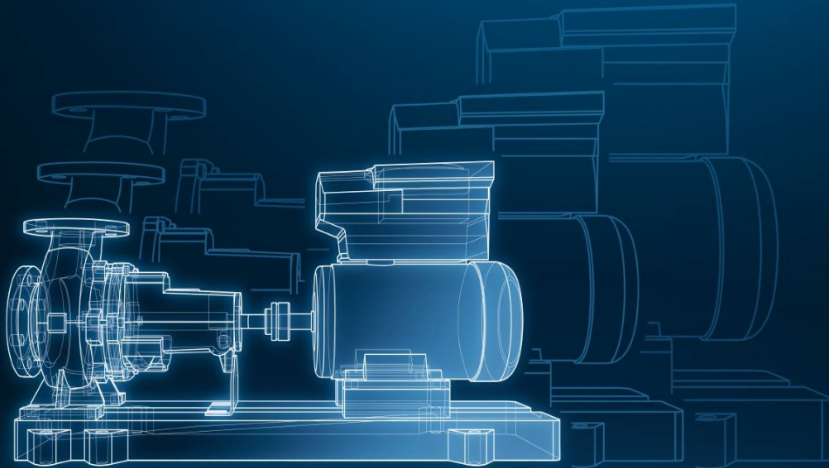


## Digitalisation **KSB Sonolyzer®**

Energy efficiency check for your rotating equipment.  
The first app that hears whether you can save energy.

You can download the KSB Sonolyzer® app free of charge for your smartphone or tablet. The pump app is available for Android and Apple devices.

# MYFLOW TECHNOLOGY



## Digitalisation MyFlow Technology

Constant flow – now more individual than ever.

- The operating point of the standardised water pump is adjusted to the system requirements
- More reliable planning by simple pump optimisation
- Reduces variant complexity by over 50 %



Digitalization  
**Where Links Mean  
Business**

**KSB EasySelect®**

- Software for selecting the right pump and valve for the job



# Contact and Copyright

## KSB Australia

📍 13 Hawkins Crescent,  
Bundamba QLD 4304

📍 13 Investigator Drive,  
Hope Valley WA 6165

1300 073 887  
[enquiries@ksb.com.au](mailto:enquiries@ksb.com.au)

© Copyright: KSB Australia 2021